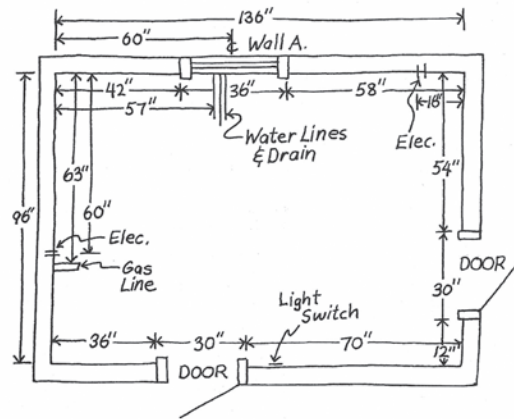


Creating a layout

Your Closets Plus designer will need some basic information about the closet space, especially in a large walk-in or if you're creating a dressing room with luxurious extras.

Space: All four walls should be measured, and should include window and door dimensions (including trim), ceiling and soffit heights, placement of light switches, electrical outlets, and utility panels. Be sure to indicate which direction doors swing. For new construction, remember to include thickness of sheetrock and proposed flooring.

Appliances: If you're planning a dressing room, it will help your designer to have info for all appliances that will be used, whether existing or new purchases—including if doors are hinged on the left or the right.



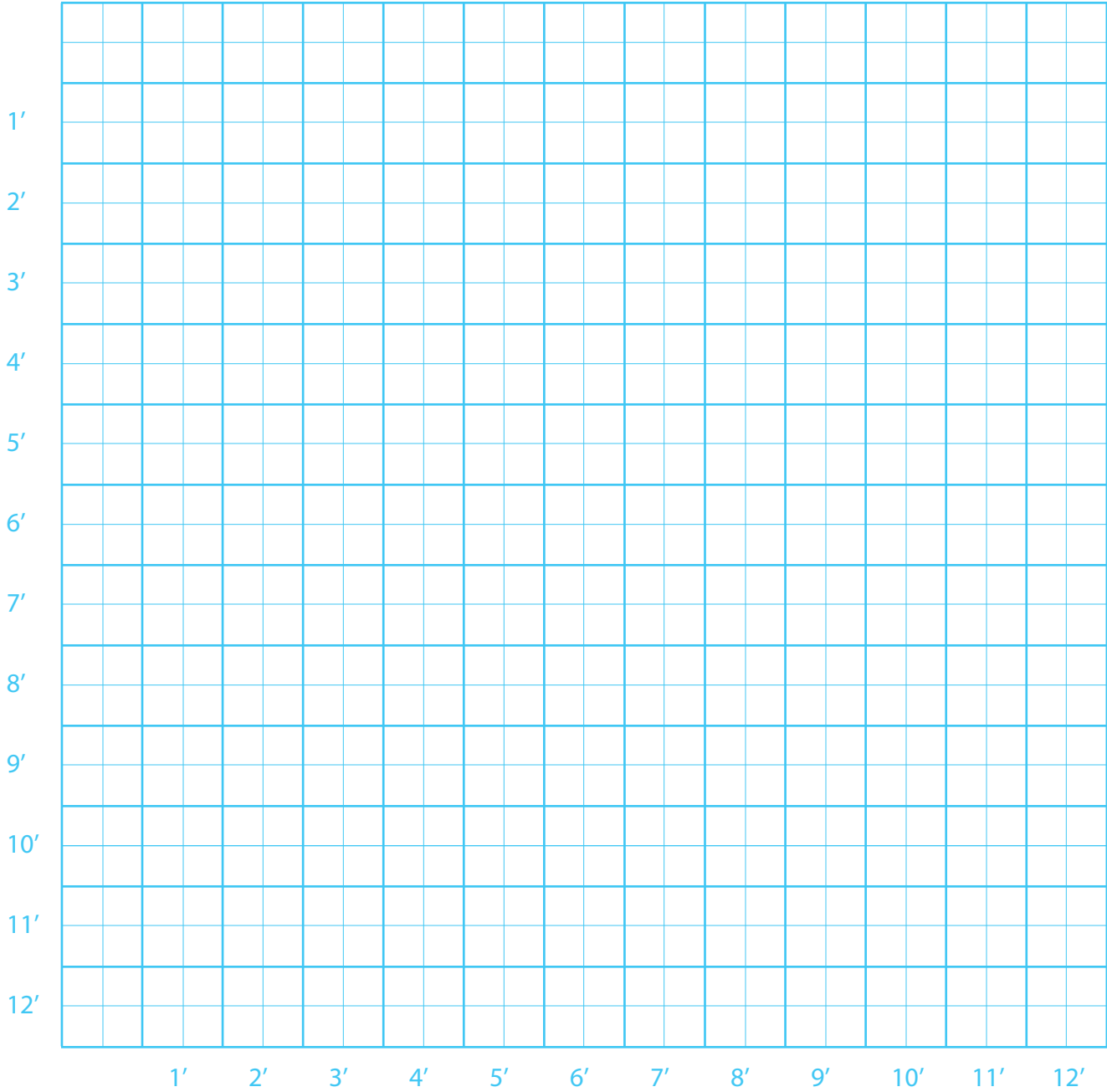
- Be sure to note locations of existing and proposed:
- doors
 - windows
 - ceiling height
 - vents
 - switches/outlets
 - attic access
 - light fixtures
 - utility panels
 - security system
 - sprinkler heads

Appliance Specifications (Provide detailed specs for all appliances that will be used in the room)

Appliance	Brand/Model	Width	Height	Depth	Hinge Pos. on L/R	"X" if Existing
Mini Fridge						
Wine Cooler						
Built In Coffee Maker						
Espresso Maker						
Washer						
Dryer						
Television						

Notes/Comments (Make note of unique features in the room, or special requests for the space)

Floor Plan Sketch (Draw out the basic layout of your space - include windows, doors and ceiling heights)



Each large square equals 1 sq. ft. and smaller squares are 6".